

## YOUR COMMUNITY FEATURES:

- Private gated lakefront community
- Beautifully designed landscaped entrances
- Underground Utility Service
- Sidewalks & street lights throughout
- Fabulous free-form pool & sundeck
- Tot lot
- Outstanding location, with quick easy access to I-75
- Multi-cycle dishwasher
- Choice of white or bisque appliances
- Stainless steel double basin kitchen sink
- Food waste disposal
- European-style upper & lower cabinetry with easy-care mica counter tops
- Pantry for added storage
- Breakfast area in selected models
- 13"x 13" ceramic tile flooring

## INSIDE YOUR HOME:

- 13"x 13" ceramic tile flooring in kitchen, baths & foyer in choice of colors
- Upgraded stain-resistant carpeting in choice of colors
- Upgraded 7/16" 6 lb. density padding
- High-efficiency central air conditioning & heating system with programmable thermostat
- Air conditioned laundry area with ceramic flooring & convenient vinyl shelving
- Full size washer & dryer
- 40 gallon double element, quick recovery, energy efficient water heater
- Front door chime
- Six panel interior doors and upgraded thumb-latch handle set at entry door
- Raised panel bi-fold doors on closets
- Walk-in closets in all master bedrooms with A/C vents\*
- Ventilated shelving in all closets
- Energy-efficient R-19 ceiling insulation
- Colonial baseboards throughout
- Smoke detectors
- Fire Sprinkler System
- Marble window sills

## INSIDE YOUR KITCHEN:

- 18 cubic foot frost free refrigerator equipped with icemaker
- 30" self-cleaning oven range with four burners
- Built-in microwave with hood light

## INSIDE YOUR BATH:

- Shower stall with clear glass enclosure in master bath
- Decorator faucets in all baths
- Elongated commode in all baths
- 13"x 13" ceramic tile flooring
- 6"x 6" ceramic tile on walls in the wet areas
- Medicine cabinet in master baths
- 42" high mirrors in all baths
- Decorator lighting
- Mica vanity with drop-in porcelain sink in baths

## OUTSIDE YOUR HOME:

- Mediterranean S-Style cement tiled roof
- Brick paver driveway, walkway, porch & patio
- Covered entry & patio
- Professionally landscaped, fully sodded homesite
- Built to new Hurricane and Florida building codes
- Hurricane shutters on all exterior windows & sliding glass doors
- Raised panel steel garage door, pre-wired for door opener\*
- Coach light at garage\*
- Six panel entry door
- Weatherproof GFI electrical outlets
- Sprinkler system
- Ten year structural warranty
- Termite treated foundation
- Steel reinforced concrete foundation



Community is located on the north side of Immokalee Rd., across the street from the Gulf Coast High School, approx. 2.2 miles east of I-75. Follow Flags to Dream Catcher Circle.

8070 Dream Catcher Circle #2201  
Naples, FL 34119

PHONE: (239) 348-0008

[www.homedynamics.com](http://www.homedynamics.com)

ORAL REPRESENTATIONS CANNOT BE RELIED UPON AS CORRECTLY STATING REPRESENTATIONS OF THE DEVELOPER. FOR CORRECT REPRESENTATIONS, MAKE REFERENCE TO THE BROCHURE AND TO THE DOCUMENTS REQUIRED BY SECTION 718.503, FLORIDA STATUTES, TO BE FURNISHED BY A DEVELOPER TO A BUYER OR LESSEE.

Square footage and depicted dimensions and measurements are approximate and may not be precise. Actual square footage and dimensions vary in production homes. Floorplans and elevations may not be to scale and illustrations are an artist's depiction. There may be variances in dimensions and details. Landscaping shown is an artist's conception and does not represent actual landscaping provided in production homes. Prices, specifications, features, amenities, plans, materials and designs are subject to change without notice. Void where prohibited by law. This does not constitute an offer in states requiring prior registration. All information should be verified by contacting the Amberton New Home Center.



HOME DYNAMICS  
CORPORATION



Amberton  
Home of the Affordable American Dream

From The Low \$200's

## Amberton Point

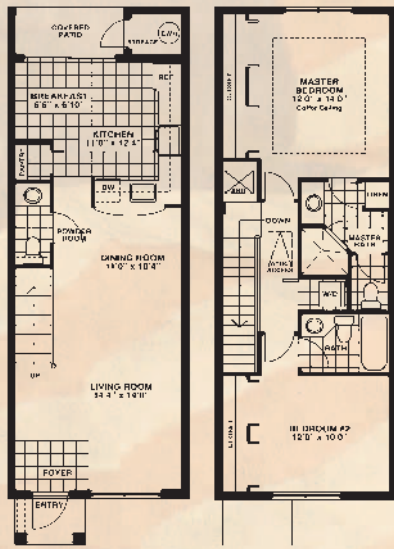


## Amberton Isles



\*Included at Amberton Isles models only. Features may vary depending on home selection. Builder reserves the right to substitute equipment, materials and appliances. Illustrations are artist's concept. Finished product may vary. All prices, plans, dimensions, features, landscaping materials and information are approximate and subject to modification without notice. COPYRIGHT © 2008 Home Dynamics Corporation. The floorplans and elevations of all Home Dynamics Corporation Homes are copyrighted. We will enforce our State and Federal Copyrights to protect the investment of our Home Buyers.

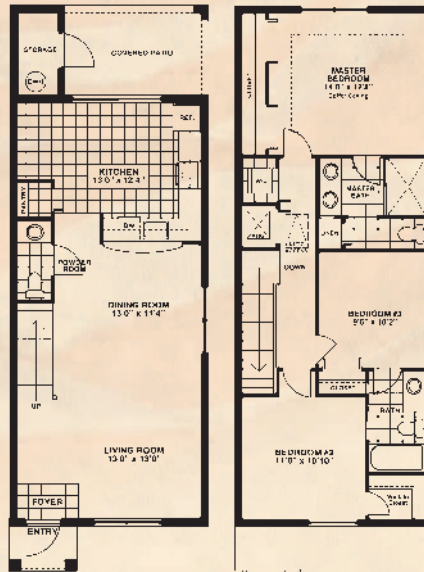
\* Models A, C also available at Amberlton Point. Not Shown.



### MODEL B

**2 Bedroom, 2 1/2 Bath**

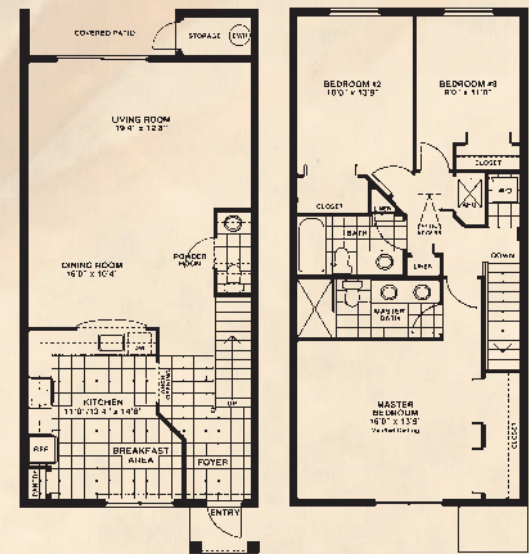
First Floor	575	S.F.
Second Floor	591	S.F.
Covered Entry	24	S.F.
Covered Patio	38	S.F.
Storage	22	S.F.
<b>Total</b>	<b>1,250</b>	<b>S.F.</b>



### MODEL D

**3 Bedroom, 2 1/2 Bath**

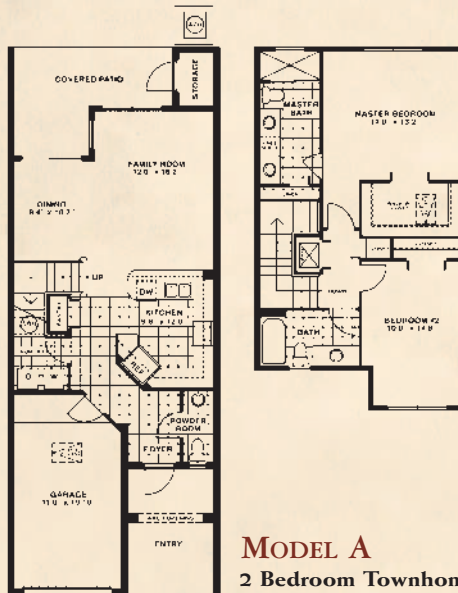
First Floor	665	S.F.
Second Floor	763	S.F.
Covered Entry	24	S.F.
Covered Patio	102	S.F.
Storage	36	S.F.
<b>Total</b>	<b>1,590</b>	<b>S.F.</b>



### MODEL E

**3 Bedroom, 2 1/2 Bath**

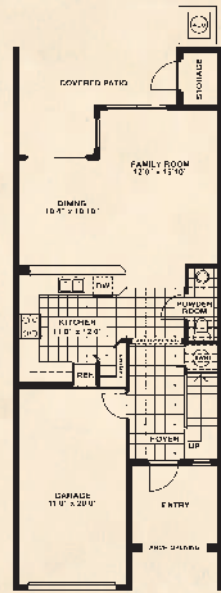
First Floor	795	S.F.
Second Floor	838	S.F.
Covered Entry	24	S.F.
Covered Patio	52	S.F.
Storage	28	S.F.
<b>Total</b>	<b>1,737</b>	<b>S.F.</b>



### MODEL A

**2 Bedroom Townhome  
2 1/2 Bath, Family Room & Garage**

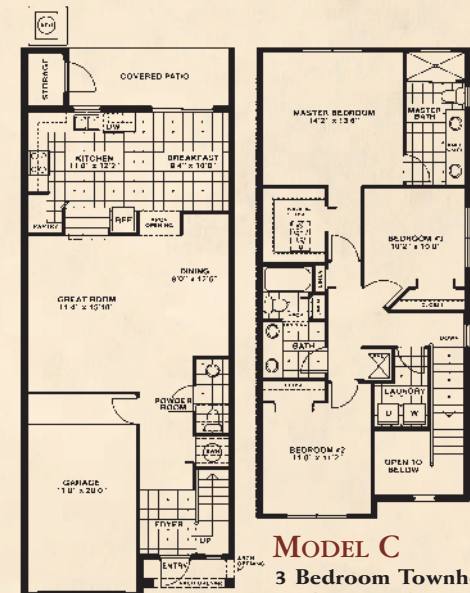
First Floor	661	S.F.
Second Floor	678	S.F.
Entry	49	S.F.
Garage	232	S.F.
Covered Patio	139	S.F.
Storage	27	S.F.
<b>Total</b>	<b>1,786</b>	<b>S.F.</b>



### MODEL B

**3 Bedroom Townhome  
2 1/2 Bath, Family Room & Garage**

First Floor	651	S.F.
Second Floor	926	S.F.
Entry	81	S.F.
Garage	245	S.F.
Covered Patio	139	S.F.
Storage	27	S.F.
<b>Total</b>	<b>2,069</b>	<b>S.F.</b>



### MODEL C

**3 Bedroom Townhome  
2 1/2 Bath, Great Room & Garage**

First Floor	793	S.F.
Second Floor	902	S.F.
Entry	26	S.F.
Garage	238	S.F.
Covered Patio	101	S.F.
Storage	27	S.F.
<b>Total</b>	<b>2,087</b>	<b>S.F.</b>